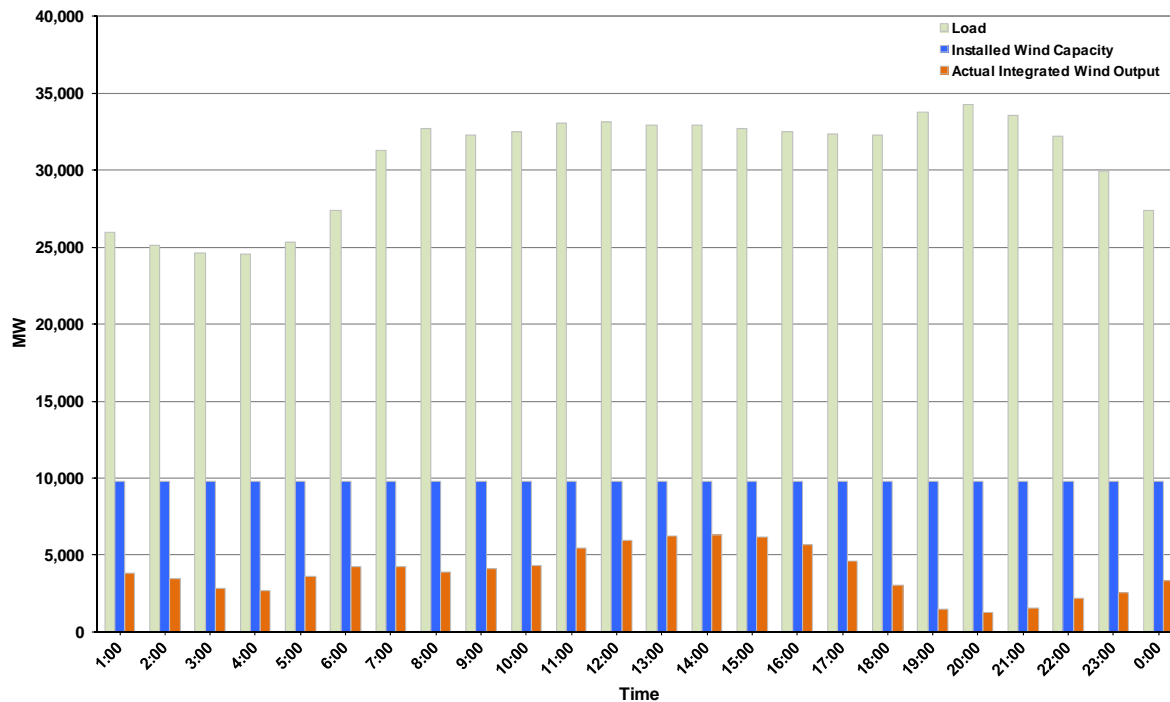




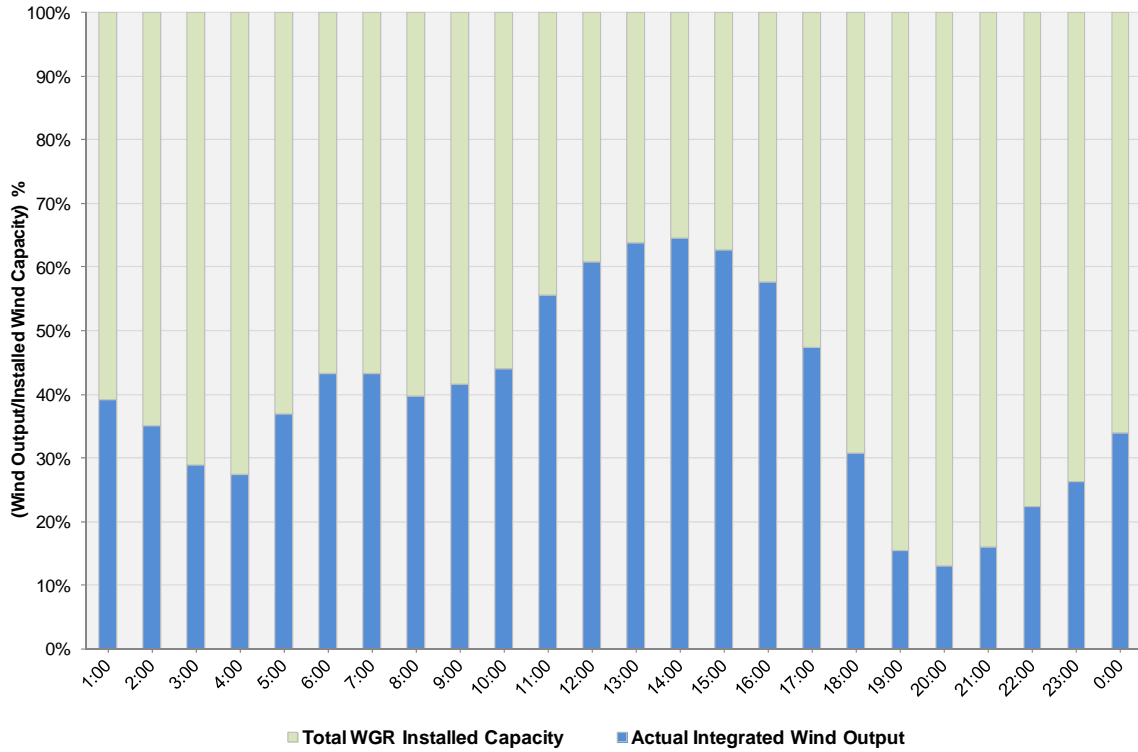
ERCOT Grid Operations Wind Integration Report: 02/15/12

Peak Load	34,264 MW
Load Peak Hour (HE)	20
Wind over Peak	1,275 MW
Wind Record 10/07/11	7,400 MW
Max Wind Value	6,460 MW
Wind Peak Time	12:56
Wind Integration %	19.64%

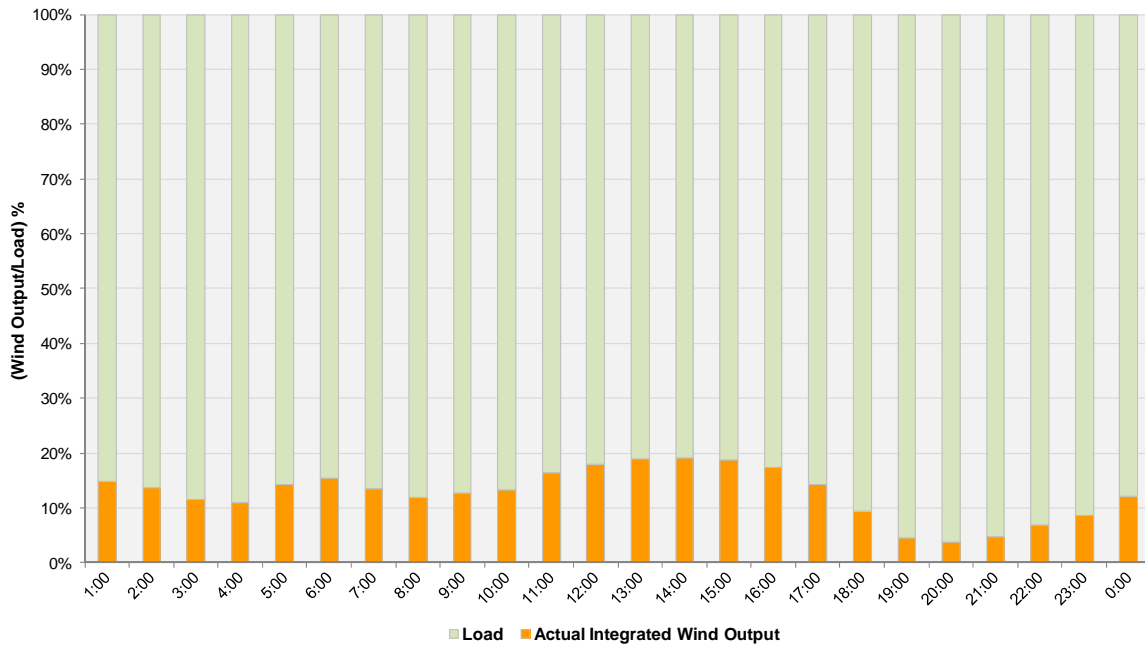
**Hourly Average Actual Load vs. Actual Wind Output
02-15-2012**



**Actual Wind Output as a Percentage of the Total Installed Wind Capacity
02-15-2012**



**Actual Wind Output as a Percentage of the ERCOT Load
02-15-2012**



ERCOT Load vs. Actual Wind Output 2/8/2012 - 2/15/2012

